

**Newsletter Number: 16**

**Date: Friday 13th June 2025**

**Dear parents, caregivers, students, families, and the wider community.**  
**E nga mātua, e nga kaitiaki, e nga tauira, e nga whānau, me te iwi whānui.**

**EPro8 Success and a Week of Achievements!**

It's been another action-packed week for our talented students at TIS, full of determination, teamwork, and community spirit!

On Tuesday evening, the EPro8 semi-finals were held at Mokoia Intermediate in Rotorua. Representing TIS with pride, our 'A Team'—Ashlee Stokes, Aiden Zheng, Andy Berriman, and Angus Eyre—put on an outstanding performance. They led for most of the evening as they worked on an ambitious build: the Thunderbird Launch Station. The team demonstrated exceptional teamwork, creativity, and problem-solving as they brought their project to life.



With nerves of steel and expert teamwork, their free-standing structure remained standing after the countdown - unlike their competitors' build - which secured their place in the Waikato/Bay of Plenty finals the very next evening.

The final proved to be an even bigger challenge. Competing against the region's best, our team placed a creditable 11th equal. Over 2.5 hours, they worked tirelessly to complete a Laser Security System - a task that required intricate precision and problem-solving. While many teams restarted their builds out of frustration, our students persevered, successfully redirecting the laser beam through four mirrors. What a display of grit and resilience!

A huge congratulations to our 'A Team' - you have made us incredibly proud. Thank you also to the parents and caregivers who travelled to Rotorua to support our students.

In other school news, well done to all students who participated in the TIS Swimming Sports at the AC Baths last week. A special shout-out to those selected for this week's Taupō Interschool Sports Meet - what a fantastic achievement!

Congratulations also to our Mountain Biking Team who competed in last week's Super 11 Competition. It's fantastic to see so many of our students stepping up to represent the school across a wide range of sports and events.

Together, through effort, perseverance, and teamwork, we are making a difference - for our school and our community!

**Nga mihi**  
**Brent Woods,**  
**Principal/Tumuaki**



# T.I.S. SPORTS

## SWIMMING PHOTO'S





# **T.I.S. SPORTS** **SWIMMING RESULTS**

## **2025 Taupo Inter Schools Swimming Championships**

### **YEAR 8 GIRLS**

**Te Rerewai Meihana**

1st 50m Back/Free/Breast

**Lola Bradley**

1st 25m Free/Breast, 3rd 50m Free

**Kiara Bullock**

2nd 25m Free,

### **YEAR 8 BOYS**

**Jack Simpson**

1st 50m Back/Free/Breast

**Levi Hemopo**

2nd 25m Back,

Julian Webster

1st 25m Free, 25m Breast, 3rd 50m Breast

**Stanley Foley**

2nd 50m Free, 25m Breast

### **YEAR 7 GIRLS**

**Ella Newth**

1st 25m Free, 50m Free, 25m Breast

**Shiloh McQuilan**

1st 50m Back, 50m Breast 2nd 50m Free

**Kauri Crabb**

1st 25m Back, 2nd 50m Back

**Isabella Sapsford**

3rd 25m back, 2nd 25m Free

**Kahlia Crocker**

3rd 50m Breast

### **YEAR 8 BOYS**

**Max Pierce**

1st 50m Back/50m Free/50m Breast

**Beau Turnbull**

1st 25m back, 2nd 25m Free

**Aaron Huang**

1st 25m Free, 2nd 50m Free,

**Jack Gibson**

2nd 50m Breast, 3rd 25m Free, 25m Breast



# **FARES ARE CHANGING | GET ONBOARD WITH NEW FARES**

*Please share the following information with your students and wider community*



**From 1 July 2025, public transport fares in Waikato will increase by 11.4% on the following services:**

**BUSIT  
Te Huia  
Flex**

**As part of recent government decisions, and the Waikato Regional Council 2025/26 Annual Plan, public transport fares are increasing.**

Waikato Regional Council will increase the portion of operational costs that's covered by Waikato public transport fare, due to rising costs of delivering services and government decision to increase local private share fare box recovery.

**See the new full fares table here [Fares are changing - 1 July 2025 – BUSIT](#)**

## **Will the fare capping still be available?**

Fare capping is still available for registered Bee Cards. The weekly payable fare cap is still 6.5 trips for youth aged 5-18 years, and the adult fare cap will remain at 9 trips (of the repeated daily journey).

However, fare capping amounts will be different. For example, in Hamilton (Zone 1) the **weekly cap for a youth Bee Card increases from \$15.60 to \$17.36.**

## **Will there be changes to the concessions?**

There will be no changes to the current concessions, benefit programmes, or transport subsidies for Waikato region Bee Card holders. SuperGold, Community Connect and Accessibility Concessions will continue for the Waikato region. A registered Bee Card and application process is required to access these public transport concessions.

## **Is cash fare still allowed?**

Cash payment is still available on the buses and train. However, cash fares will increase 11.4 % and reflect rounded-up figures.

Cash fares will increase between \$1-\$4; depending on how far you travel. For example, within **Hamilton city** transport, **cash fares will increase by one dollar from \$5.00 to \$6.00.**

**If you would like us to deliver any further information, or have any queries, please feel free to contact our BUSIT team: [busit@waikatoregion.govt.nz](mailto:busit@waikatoregion.govt.nz)**

# T.I.S STAFF NEWS

## STAFF SNAPSHOT



*Kia ora! My name is Priscila Shepherd, and I'm thrilled to be part of the amazing team here at Taupō Intermediate School. Originally from Brazil, I've called Aotearoa home for the past 21 years. I'm married to a down-to-earth Kiwi farm boy, and together we're raising our three wonderful children—Dylan, Antonia, and Olivia—right here in this beautiful part of the world. I feel incredibly privileged to be teaching our very first all-girls class at Taupō Intermediate this year. It's an exciting opportunity and one I've embraced with pride and purpose—hoping to leave a meaningful mark and create a nurturing, empowering environment for our girls to thrive. Outside the classroom, you'll usually find me out on the trails. I'm passionate about mountain biking and bikepacking—there's something so freeing about exploring nature on two wheels. I also love to travel and soak in different cultures and experiences. Whether it's planning the next biking adventure or cheering my own kids on in their sports and school life, I'm all about balance, community, and connection. Please don't hesitate to come and say hi!*

## TECHNOLOGY

**Welcome to the Technology and Science classes. Our creative designers and scientists have been collaborating, designing and experimenting this week.**



# **TAUHARA COLLEGE & TAUPŌ-NUI-A-TIA COLLEGE SCHOOL VISITS**

## **(YEAR 8 STUDENTS)**

### **Enrolment for 2026.**



Kia ora koutou,

We're writing together from Tauhara College and Taupō-nui-a-Tia College to share a quick update about our upcoming Year 8 enrolment activities.

Both colleges are now zoned, and to help make things as smooth as possible for everyone, we've coordinated our visits and open evenings to keep the week streamlined and stress-free for contributing schools, students, and whānau.

*Both Colleges will contact contributing schools directly to arrange transport for the school visits.*

#### **Contributing School Visits to the Colleges.**

##### **Taupō-nui-a-Tia College will host:**

- Friday Week 5 (15 Aug): Hilltop, Mountview, St Pat's and others
- Mon-Tues of Week 6 (18 & 19 Aug): Taupō Intermediate and others
- Visits run from 9:30 a.m. to 12:00 p.m.

##### **Tauhara College will host:**

- Mon-Tues of Week 6 (18 & 19 Aug): Taupō Intermediate
- Thursday of Week 6 (21 Aug): Hilltop, Mountview, St Pat's and others
- Visits also run from 9:30 a.m. to 12:00 p.m.

##### **Open Evenings for Whānau and Students**

- Taupō-nui-a-Tia College: Wednesday evening, Week 6 (20 Aug)
- Tauhara College: Thursday evening, Week 6 (21 Aug)

We're both excited to welcome your students and give them a chance to explore our two amazing high schools. Thanks for your ongoing support in making enrolment week a success for our ākonga and their whānau.

Ngā mihi nui,

Ben Hancock – Principal, Tauhara College

Ben Claxton – Principal, Taupō-nui-a-Tia College



# THE SUPPORT HUB

*"Children don't get traumatised because they get hurt - they get traumatised because they were **alone** in their hurt."*  
- Dr. Gabor Maté

The use of our library space during lunch times. A nice quiet are for students to read alone, with a friend or have a game of giant chess. Books can be issued and kept for two weeks. Please encourage your child to read each day.



**Support hub proudly presents the Taupo Intermediate Shout Out noticeboard.** Have you got a great sports coach? Did the teacher go above and beyond for you? Have some parents supported your class activities?

Did a random student help you in the playground?

Please let us know and we'll put it on our board.

**Email any messages of thanks or praise to [LearningSupport@taupointermediate.co.nz](mailto:LearningSupport@taupointermediate.co.nz).**

Help us fill the board with all the positive people in our school.  
Be sure to mention their name and a brief message why you've given them a shout out.



## **SIGNING STUDENTS IN/OUT OF SCHOOL** **REMINDER:**

Parents, caregivers & whanau please remember when collecting your student from school whether it be for an appointment or sickness, you **NEED** to sign them out at the front office.

Also please advise the Office in advance if it is someone else other than the parent or caregiver who we have on record that is collecting the child.

# T.I.S BOARD INVITATION

Let's Talk: Our School, Our Future  
Hosted by the Taupō Intermediate School Board

Join us for kōrero (discussion) and connection.

We will share what we have been working on behind the scenes over the past two years – the progress we are proud of, the challenges we've faced, and our plans.

There will also be time for questions, open discussion, and an opportunity to share your ideas over a cuppa. Your voice matters, and we are here to listen.

Date: Wednesday 18 June

Time: 5:30 PM

Location: Taupō Intermediate School

All parents, whānau, and children are welcome.

**KIDS  
MARATHON**  
**FAMILY**  
**FITNESS/RUN  
SESSION**



  
**CAREGIVERS  
MUST ATTEND  
WITH YOUR  
CHILD**

**Please join Aimee on these Sundays at 3pm**

- **Sunday 15<sup>th</sup> June** -3pm-4pm @ **Wharewaka Reserve** (Meet beside the playground)
- **Sunday 22<sup>nd</sup> June** - 3pm-4pm @ **Spa Park** (Meet at the carpark by the pump track)
- **Sunday 20<sup>th</sup> July** - 3pm-4pm @ **Owen Delany Velodrome** (beside the Netball Courts)
- **Sunday 27<sup>th</sup> July** - 3pm-4pm @ **Main Lake Front** (outside the Main lake front Steaming Bean coffee cart)



# SCHOOL HOLIDAYS - MOVIE DAY SUNDAY

## 29<sup>TH</sup> JUNE 2025

12 local Taupo college girls will be heading to Hong Kong on a 7s Rugby Tour at the end of September this year. This is a once in a lifetime experience and for many the first time on a plane and travelling out of Aotearoa. They are fundraising hard to keep costs down. The Movie day is the 29<sup>th</sup> June at the Great Lake Centre.

The girls thought that as we don't have a movie theatre in town it would be a good chance for people to head to the movies during the school holidays.

Tickets can be purchased online - Kids \$11 and Adults \$16.

<https://www.trybooking.com/nz/XNC> Jumanji

<https://www.trybooking.com/nz/XND> Transformers

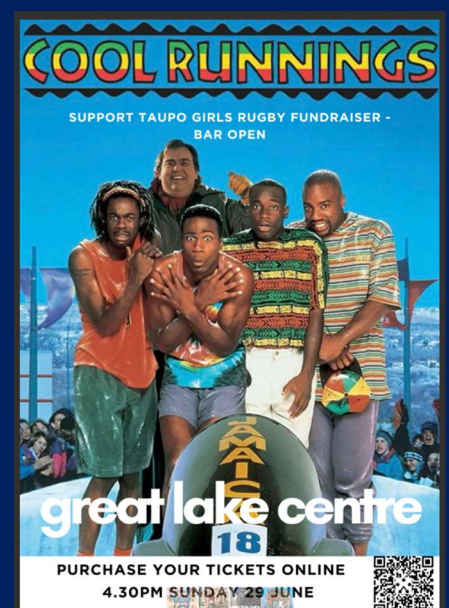
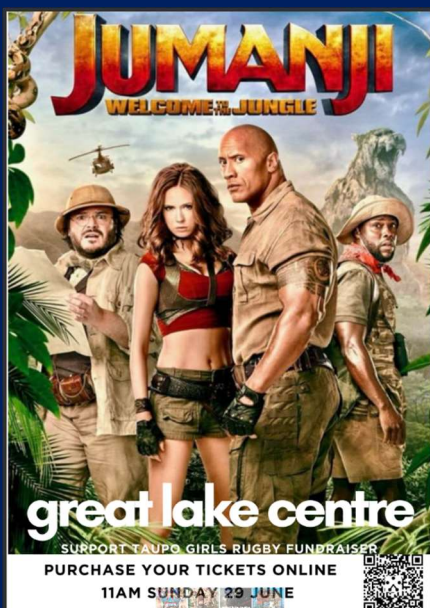
<https://www.trybooking.com/nz/XNE> Cool Runnings

If you have any questions please get in touch.

Nga mihi nui,

Rose Prisk - Manager

027 6312688



# **TI.S IMPORTANT** **UPCOMING DATES**

**Wednesday 18<sup>th</sup> June**

**Team Ruapehu Matariki Celebrations**

**Thursday 19<sup>th</sup> June**

**Room 17 – Boys Class Weta Trip**

**Super 11 Rock Climbing -AC Baths**

**Super 11 Rugby League**

**Friday 20<sup>th</sup> June**

**Matariki – School Closed**

**Wednesday 25<sup>th</sup> June**

**Kiwi Sport Orienteering – Big Day out**

**Friday 27<sup>th</sup> June**

**Last day of school for Term Two**

-----

**Monday 14<sup>th</sup> July**

**First day of school for Term Three**

**Tuesday 15<sup>th</sup> July**

**Room 4 Snow Trip**

**Wednesday 16<sup>th</sup> July**

**Room 4 Snow Trip**

**Friday 18<sup>th</sup> July**

**Super 11 Basketball**

**Friday 25<sup>th</sup> July**

**Super 11 Winter Tournament**

-----

**Friday 1<sup>st</sup> August**

**Super 11 Cross Country**

**Friday 8<sup>th</sup> August**

**Super 11 7s Rugby**

**Monday 11<sup>th</sup> August**

**Room 16 Whirinaki Camp**

**Tuesday 12<sup>th</sup> August**

**Room 16 Whirinaki camp**