



Newsletter Number: 15

Date: Friday 22nd May 2026

Tēnā koutou e te whānau, parents and caregivers,

What an energising week it has been at Taupo Intermediate School. Once again, we were excited to celebrate Youth Week and shine a light on the incredible organisations within our community that support our young adolescents. We are fortunate to have such dedicated agencies working alongside us, and we appreciate the positive impact they continue to make for our students.

Welcome to Our New Board Members

We are excited to welcome our two newly selected board members to the TIS whānau:

- Pia Carpenter
- Ebony Paaka

They bring valuable strengths and perspectives to our already high-functioning board team. We look forward to the contributions they will make to the governance of Taupo Intermediate School.

SMART Tool Assessments – Final Week

This week marks the cut-off for the Ministry of Education SMART Tool assessments in reading, writing, and mathematics & statistics. We are looking forward to seeing what our class and school-wide data reveals through this new assessment platform. While the SMART Tool provides only a snapshot of student learning, it offers valuable insights, and we are eager to explore the results.

Super 11 Futsal – Congratulations to Our Teams

A huge congratulations to our Super 11 Futsal teams for their efforts last Friday.

- The girls' team exceeded expectations, finishing 4th overall.
- The boys' team faced tough competition and finished 9th overall, showing resilience and determination throughout the day.

Thank you to the parents who transported and supported our teams in Mount Maunganui. Your involvement makes these opportunities possible.

School Band Performance

Congratulations to our school band, who performed for students during Wednesday lunchtime. Their talent and teamwork were on full display, and if this is their starting point, they are certainly shaping up to be strong contenders for the upcoming Band quest competition.

Outdoor Adventure Group – 28 Students Involved

It was fantastic to see 28 students participating in our Outdoor Adventure programme this week. Students experienced rock climbing, kayaking, and an overnight stay at Memorial Hut—a memorable and confidence-building experience for all involved.

A special thank-you to EONZ for providing facilitators and making these opportunities possible, and to Mr Blake and the parent helpers for their support and leadership throughout the event.

Looking Ahead – Midpoint of Term 2

Next week marks the midpoint of Term 2, and we are committed to maintaining our momentum as we continue 'striving for excellence' in everything we do. It's a great time to refocus, set goals, and keep pushing forward.

Thank you for your ongoing support and engagement with our school community. Together, we continue to create an environment where our students can thrive.

Ngā mihi nui,

***T.I.S OFFICE – Parents & Caregivers if any of your contact details change, please contact us
07-378-8097 or email us: admin@taupointermediate.co.nz***

"Make a positive difference through the T.I.S way"

TEACHER ONLY DAYS

Teacher Only Days

Term 3 - Friday 28 August 2026 – School Closed
(Structured Literacy professional learning)

Term 3 - Friday 25 September 2026 – School Closed
(Structured Literacy professional learning)

ATTENDANCE CORNER

Attendance Progress Report: Term 2 Week 5

Weekly Comparative Attendance Data

ATTENDANCE RATE FOR THE SCHOOL				
Attendance Threshold Rates				
	Regular	Irregular	Moderate	Chronic
	91%-100%	81%-90%	71%-80%	Below 70%
	Maintenance & Recognition	Early Intervention	Support & Strategy	Intensive Recovery
Week 1	82.27%	3.59%	6.57%	7.57%
Week 2	66.87%	16.67%	7.94%	8.53%
Week 3	69.90%	12.28%	6.93%	10.89%
Week 4	64.82%	18.97%	8.70%	7.51%
Week 5	66.93%	16.44%	8.71%	7.92%

Comparative between Weeks 4 & 5

Regular Attendance Improved - Week 5 saw a **2.11% increase** in students attending 91–100%. This suggests that **maintenance and recognition strategies** may be working effectively.

Irregular Attendance Declined - A **2.53% decrease** in the Irregular category is a positive shift. This indicates fewer students are slipping from Regular into Early Intervention territory.

Moderate Attendance Remains Static - The Moderate category shows **no meaningful change** (8.70% → 8.71%). Students in this band may require **more targeted support** to prevent escalation into Chronic absence.

4. Chronic Absence Slightly Increased - A **0.41% rise** in Chronic attendance is small but important. This group requires **Intensive Recovery** efforts, and the increase suggests current interventions may need strengthening.

Summary

Week 5 demonstrates **overall improvement**, driven by stronger Regular attendance and fewer Irregular cases. However, the **Moderate and Chronic categories remain areas of concern**, with Chronic absence showing a slight rise. We will continue focus on targeted interventions - especially for students below 80% attendance.

BOARD CORNER

Announcement

Tēnā koutou katoa,

The Board is very pleased to announce that, following the notice to the community in April, we have now completed the process to select two new parent representative members to fill Board vacancies and bring the Board back to full strength.

We are delighted to welcome Ebony Paaka and Pia Carpenter, who were selected at our Board meeting last week.

Ebony and Pia each bring valuable skills and experience that broaden and complement the Board's overall capability. We are thrilled to have them join the team.

On behalf of the Board, a very warm welcome to Ebony and Pia.

Ngā mihi,
Simon Bendall

Pia Carpenter



Ebony Paaka



Upcoming Board Meetings

Our scheduled meetings for Term 2 will take place in the staff room on the following dates:

Thursday, 18th June 2026 at 5.30pm
Thursday 6th August 2026 at 5.30pm

Community members are always welcome to attend.

BOARD CORNER

Introducing Board Member Fiona Miller

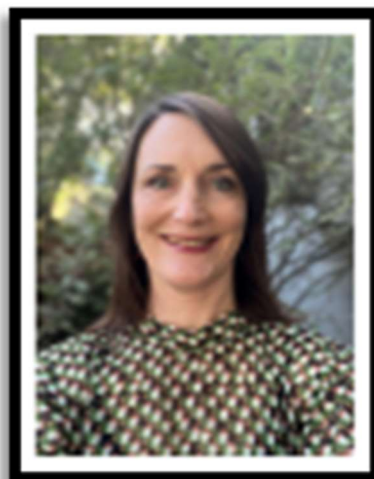
Hello! I'm Fiona Miller, and I serve you on the TIS board. I believe every child deserves the opportunity for a quality education, providing them with confidence and optimism for their future. Key to this is being seen and respected as an individual in a safe and engaging learning environment, both in and beyond the classroom.

My eldest child started at TIS this year, while the younger two attend Waipahihi School. I'm a strong believer in developing solutions, rather than pointing fingers at problems. I bring a passion for education to the board, relevant management skills and governance experience, and a genuine desire to hear and represent your voice. Intermediate is a critical transition between primary and secondary schooling.

TIS offers academic stretch, cultural enrichment, competitive sports, education outside the classroom (EOTC) and introduction to specialist subjects. While I support the school's strategic direction and changes management are implementing, I believe there is still much mahi needed to make these opportunities a reality for all students. Areas of concern I've heard voiced by parents include school transitions, communication, whanau engagement, physical safety, professional conduct and equitable learning opportunities. I come from a family of teachers, making me aware of the challenges faced by schools and staff.

My Waipahihi School board role (2020-current) has provided deeper understanding of The New Zealand Curriculum. I am especially passionate about celebrating cultural and learner diversity, EOTC, sparking passion for STEAM and related careers, and student achievement. My professional background and passion is science and its real-world application (BSc, BAppSciHons, MBA). I am a self-employed business consultant, previously holding senior roles in research and agribusiness companies including AgResearch, LIC and WaikatoLink, and supporting geothermal industry growth here in Taupo with Amplify. This experience, alongside investment committee (UniQuest) and industry board (NZGA) experience, gives me strong strategic and financial planning skills.

I am also deeply involved in the Taupo community through education and junior sports. I am a Trustee for CSPACT / Memorial Hut (2023-present), Trustee and Treasurer of Tawa Early Learning Centre (2020-2024) and Officer and Secretary of Taupo Family Playcentre (2014-2023). I coach junior hockey and football, and actively support my kids' schools on EOTC and sports events. I am keen to support the TIS Board and staff to transform our school from the default option into one that we are all proud of.



PHYSICAL EDUCATION

This week in Physical Education, students have been diving into Olympic Handball and having an absolute blast learning the rules, zones, and game play. The energy during lessons has been awesome, with students showing off some fierce jump shots, epic hand-eye coordination, and fantastic teamwork.

A big thank you to Camex Civil for their generous support towards our new handball nets. The students absolutely love them, and they have added a whole new level of excitement to our PE sessions.

We are continuing to use modified games and activities to help students build their skills and confidence before finishing each session with game play. It has been fantastic seeing students' individuality shine through as they try new moves, support their teammates, and get fully involved. Most importantly, participation has been high, and the joy, laughter, and fun on the court have been amazing to see and hear!

"Move, laugh, learn, repeat!"

Pe team - Dee & Charne





T.I.S SPORTS



CO-ORDINATOR NEWS!

Sports Bulletin

Well done to the TIS Futsal Teams who competed in Tauranga last week at the Super 11 Futsal Tournament.

The boys displayed great skill, teamwork, and determination throughout the day. Every match was closely contested, but unfortunately they just could not quite finish off their opportunities.

The girls had an outstanding tournament, progressing through their pool games to play off for the Bronze Medal. After a fantastic battle in the playoff match, they were narrowly defeated by Otumoetai Intermediate to finish an impressive 4th overall.

It was a great day of futsal and the students represented TIS with pride both on and off the court.

A big thank you to Mrs Reeve and Mr Brunsdon for coaching and taking the teams away for the tournament.

AIMS Games Football Trials are now underway, with the girls trialling this week and the boys next week. Boys trials will take place on Monday 25th May on the School Field and Wednesday 27th May at Crown Park at 3:15pm. It has been great to see so many students putting themselves forward for the opportunity to represent TIS at AIMS Games.

We have also had Orienteering and Super 11 Rock Climbing sign-ups taking place in the office this week. Both events have been popular. However, as with all Super 11 events, students must demonstrate a suitable level of competence to be able to compete successfully at this level.

Winter sports are continuing to go well across all codes. It was fantastic to see the netball teams all performing strongly last week, while the hockey teams recorded some convincing wins on Wednesday night. Basketball also had a positive start with encouraging results in the first official round of competition.

Thank you for your continued support of TIS sport, and have a great week



THE SUPPORT HUB

Donations and Volunteers

A huge thank you to Lynise Morrison and Equippers Church Taupō who kindly donate 40 sandwiches to us each week. Thank you so much to Kaylah Nield and her Mum Lisa for their donation of 2-minute Noodles to our Support Hub also.

With these types of donations and the student volunteers who come in at lunch time to cook and serve the toasties, we are able to ensure students who require some food for lunch have the choice to come and collect it - no questions asked.

We are currently looking for parent volunteers to come in and run our Breakfast Club in the hall. Staff that used to run this initiative have moved on. To get it up and running again, we need volunteers from our community to step in.

Breakfast Club runs from 815am until 845am in the school hall. We offer Milo and Weetbix as a quick and easy option for filling tummies before school starts.

If you can help out with this, please email Rebecca at learningsupport@taupointermediate.co.nz or call the school office.



Room 11 and Room 24 showing off their pink shirt day clothing
Everyone is proud to be supporting the cause of anti-bullying

THE SUPPORT HUB

A LITTLE PROGRESS
EACH DAY

ADDS UP TO
BIG RESULTS

LIKEWISE

A LITTLE
ABSENCE EACH DAY

ADDS UP TO
BIG RESULTS

10 MINUTES A DAY = 50 MINUTES PER WEEK

GET TO SCHOOL ON TIME!

IT'S ONLY ONE DAY A WEEK

1 day
off a
week

1

Equals
10 days
off a
term

10

Equals
40 days
per year

40

Equals
8 weeks
per year

8

These days all add up!!



If students do not own a fleece, we have so many fleeces available!

The Support Hub have plenty for your students during this wet, windy and cold winter weather.

Please also remind your students to name their clothing as when we go through lost property we can return them easily.

THE SUPPORT HUB



Our community agencies started the week at TIS off with an amazing lunchtime full of activities. Thanks to Taupo Budget advice, He Kahui Tangata Mentoring, Anamata Youth One Stop, Whanau Taupo, Ara Taiohi, Taupo District Council and Bluelight Police for contributing. Bluelight Police for the delish sausage sizzle. Youthtown had some archery going on. Real had back yard games, surveys, lollies, VR head sets, ruppa challenges and comfy bean bags on offer. Such a vibe on our field.





We're now officially one month out from Pillar to Pou Pioneers
- our kids' fun run on the Taupō lakefront.

Friday 12th June | 4pm | Ages 4-15

A reminder that schools can still take part in our fundraising initiative:
Families receive 10% off entry using your school code, and
10% of every entry is donated back to the school.

The school with the most entries will have its donation doubled.
We'd love your help sharing this with your school community.

More info and entries:

www.pillartopou.com/kids-event

T.I.S TUCK SHOP KRISTIE'S KAI

MORNING TEA BREAK - 10.40AM-11.10AM

(Buy items at tuckshop window)

LUNCH TIME BREAK - 12.40-1.20PM

(Buy items at tuckshop window)



SUSHI AVAILABLE - Every TUESDAY (Order at tuckshop by 9am)

YOUR PUBLIC HEALTH NURSE AT YOUR SCHOOL!

Here to support you, your whānau and your wellbeing.

Public health nurses are registered nurses who work with children, young people and their whānau to promote health and provide support to enhance wellbeing.



WE CAN HELP WITH:

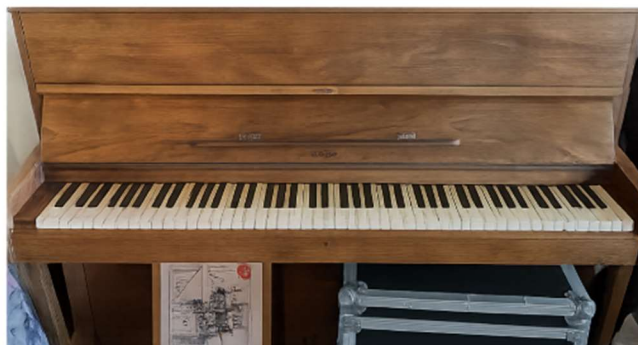
<p>Communicable disease management and prevention</p>	<p>Immunisation programmes</p>	<p>Ear health</p>	<p>Vision</p>	<p>Supporting children with complex needs</p>
<p>Child advocacy</p>	<p>Enuresis and encopresis care plans</p>	<p>Skin conditions and allergy support</p>	<p>Rheumatic fever testing</p>	<p>Swabbing</p>

<p>CONTACT CLAIRE ANDERSON Monday to Friday 027 550 1199 claire.anderson@lakesdhb.govt.nz</p>	<p>TAUPO PHNs 07376 1012 or 0800 MY NURSE (0800 696 8773) lakeskids@lakesdhb.govt.nz Attention PHN Taupo</p>
--	---

Healthy kids, thriving communities, whānau ora!

FREE PIANO TO A GOOD HOME

Will have a tune before pickup.
It will need to be picked up.



Txt only please 021724775

TechWeek 2026

Expand Your Child's Horizons!

FREE

Beginner to advanced coding lessons available at 4pm, 5pm and 6pm every day during TechWeek.

Students learn a lot in one hour!

Ages: 9&10, 11&12, 13&14, 15 to adult

Book now at codingnz.com/freeactivity



PERFORMING ARTS

TECHNOLOGY

Hello, our names are Charlotte, Jayde and Kauri and this year we are going big with our music, acts, and band this term.

Production

Our production is going to be the biggest one yet. This year, our act is about a memory machine and a grandfather's memories. The memory machine reveals each and every memory to then unfold the story. This production is called 'KIWIANA - The Musical.'

This production has 16 main roles and lots of other opportunities for students like backstage, sound effects, lighting, and so on.

On Wednesday the 13th of May, after interval, we had our first audition and roughly 52 people—give or take—turned up to audition. Out of the 52, 20 people got callbacks for the main roles, but even though only 20 are getting callbacks, everyone who auditioned will get a role in this year's play. From trees to netball players, from rugby supporters to Holden dealers, all children who participated in the audition will get a role in this sensational play.

One of the callback students quoted that the 'auditions were a bit stressful because there were multiple people watching and there was lots of competition, but all in all it was pretty fun.'

So, as we have gathered from the students that auditioned for the 2026 production, some people were nervous, some were excited and having fun, and some were bored while waiting for their turn to audition. Overall, the audition was remarkable and we can't wait to see what happens at the next auditions.

Performing Arts

For the second term since this exciting Specialisation class has begun, the class has become more structured and most of the students have progressed more than they did last term. We will then write lyrics for the chorus and add beats and melody for that too. Afterwards, we will repeat these steps to create enough lyrics and melody to form the main structure of the song.

The next steps will be to add in a drum beat and create a groove, then add in a bass line. After that, we will add choruses and harmony so the song isn't just made from a simple melody.

We will then be allowed to experiment with instruments to find what works best with the melody. For the final steps of our spectacular song, we will create an intro and outro to finish it off. But that won't be all... students who finish their songs will be allowed to record them, adding in vocals.

PERFORMING ARTS TECHNOLOGY



Band rocking it in the hall of fame!!

On Wednesday the 20th of March, the school band had a concert during lunchtime. The concert was energetic, phenomenal, and brought smiles to the whole crowd. It was upbeat, fun, and everyone was singing and dancing along to the tunes.

When the bell rang for lunch, people rushed into the hall, excited to watch our incredible band perform. The songs they performed were Holiday, Don't Look Back in Anger, Valerie, Before You Leave, In the End, and Into Yesterday, with each song bringing more and more cheers from the audience.

Pippa, the captain of the band, said that 'Even though it was their first performance together, it was pretty fun and made wonderful memories.'

We can't wait to see what happens next with the band. Thank you for reading our marvelous newsletter article!



T.I.S IMPORTANT **UPCOMING DATES**

MAY/JUNE/JULY **TERM TWO**

Week 6

Friday 29th May - Super 11 Mountain Biking Rotorua

Week 7

Monday 1st June - Kings Birthday - School Closed

Wednesday 3rd June - Celebration Assembly

Thursday 4th June - Epro 8 Challenge

Thursday 4th June - Greening Taupo Day

Friday 5th June - Epro 8 Challenge

Friday 5th June - Super 11 Pickleball or Ultimate Frisbee

Week 8

Tuesday 9th June - OAC Bushcraft at Lake Rotopounamu

Wednesday 10th June - Taupo Inter Schools Swimming

Friday 12th June - Super 11 Rock Climbing Taupo

Week 9

Monday 15th June - OAC Kayaking

Wednesday 17th June - Celebration Assembly

Thursday 18th June - Board Meeting 5.30pm-7.30pm

Friday 19th June - Super 11 Indoor Bowls

Friday 19th June - School Reports home to parents

Week 10

Monday 22nd June - Leadership Camp

Tuesday 23rd June - Leadership Camp

Wednesday 24th June - School Speeches

Friday 26th June - Super 11 Indoor Bowls

Week 11

Wednesday 1st July - Celebration Assembly

Friday 3rd July - Last day of Term 2

T.I.S STAFF **(CONTACT INFORMATION)**

TAUPO INTERMEDIATE STAFF

Board Presiding Member: Simon Bendall (sbendall@taupointermediate.co.nz)

Principal: Brent Woods (bwoods@taupointermediate.co.nz)

Deputy Principal: Sam Blake (Year 8 Dean) (sblake@taupointermediate.co.nz)

Deputy Principal: Michelle Patterson (Year 7 Dean) (mpatterson@taupointermediate.co.nz)

Sports Coordinator: Sam Bradley (sport@taupointermediate.co.nz)

CLASSROOMS/TEACHERS

Room 1

Zoe Fletcher (zfletcher@taupointermediate.co.nz)

Room 2

Wendy Marais (wmarais@taupointermediate.co.nz)

Room 3

Performing Arts: Jon Wood (jwood@taupointermediate.co.nz)

Room 4

CWAA CLASS Sarah Hack (shack@taupointermediate.co.nz)

Room 5

Kelly Rangihika (krangihika@taupointermediate.co.nz)

Room 6

Salendra Kumar (skumar@taupointermediate.co.nz)

Room 7

Shivani Chand (schand@taupointermediate.co.nz)

Room 8

Pamela Clydesdale (pclydesdale@taupointermediate.co.nz)

Room 9

Cheryl Berkahn-Weir (cberkahnweir@taupointermediate.co.nz)

Room 10

Kriza Cruz (kcruz@taupointermediate.co.nz)

Room 11

Suzanne Rokstad (srokstad@taupointermediate.co.nz)

Room 12

Giovanna Frizon (gfrizon@taupointermediate.co.nz)

Room 13

Maria Gray (mGray1@taupointermediate.co.nz)

Room 14

Courtney Warren (cwarren@taupointermediate.co.nz)

Room 15

Courtney Fitness (cfitness@taupointermediate.co.nz)

Room 16

Kim Crofskey (kCrofskey@taupointermediate.co.nz)

Room 17

Samantha Barr (Howe) (sbarr@taupointermediate.co.nz)

Room 18

Donna Shaw (Literacy Support)

Room 19

Bernadette Gallagher (Numeracy Support)

Room 20

(Support Hub Office & Hauora Room)

Room 21

Rebecca Ingram LSC Support Hub (learningsupport@taupointermediate.co.nz)

Room 22

BOYS CLASS Rob Emerson (rEmerson@taupointermediate.co.nz)

Room 23

BOYS CLASS Phil Somers (psomers@taupointermediate.co.nz)

Room 24

GIRLS CLASS Priscila Shepherd (pshepherd@taupointermediate.co.nz)

Room 25

GIRLS CLASS Jacqueline Emerson (jEmerson@taupointermediate.co.nz)

TECHNOLOGY TEACHERS

Food Technology: Amy Kingan (AKingan@taupointermediate.co.nz)

Visual Arts: Pamela Wood (pwood@taupointermediate.co.nz)

Materials & Design: Nikki Morris (nmorris@taupointermediate.co.nz)

Performing Arts: Jon Wood (jwood@taupointermediate.co.nz)

Science: Kate Callaghan (kcallaghan@taupointermediate.co.nz) &

Amanda Mangelsen (aMangelsen@taupointermediate.co.nz)

LEARNING ASSISTANTS

Learning Assistants: Donna Shaw/Bernadette Gallagher/Carol Davis

Merenea Hurae/Kelvin Crickett

Cameron Bradley/Nia Maxwell

Dee Campbell/Charne Whitham

OFFICE/SUPPORT STAFF

Office Manager/PA: Rachel Wakelin (admin@taupointermediate.co.nz)

Finance Manager: Corinne Jacobshagen (accounts@taupointermediate.co.nz)

Office Receptionist: Dianne Coe (office@taupointermediate.co.nz)

Resource Manager: Libby White (adminassistant@taupointermediate.co.nz)

Caretaker: Mark Hadfield (mhadfield@taupointermediate.co.nz)

Tuckshop Manager: Kristie Bush (kbush@taupointermediate.co.nz)