



**Newsletter Number: 20      Date: Friday 26th June 2026**

**Tēnā koutou e te whānau, parents and caregivers,**

We have now completed Week 10, with just one more week remaining in Term 2. As we work towards the end of the term, our focus remains on maintaining our strong school-wide attendance rate and ensuring all students stay engaged, connected, and actively involved in both their learning and the many opportunities available to them.

Term 3 is always one of our busiest terms, and this year has been no exception. Our staff and students continue to balance a wide range of commitments with enthusiasm and dedication. Across the school, students are participating in winter sports after school and on Saturday mornings, while others are busy preparing for our upcoming school production, Kiwiana. Our Dance NZ Made troupes are working tirelessly as they prepare for their event in early August, and our school band is rehearsing regularly in anticipation of the Band Quest competition in the middle of Term 3.

These activities are wonderful examples of our school value of Involvement in action. We are incredibly proud of the way our students embrace opportunities, challenge themselves, and contribute positively to our school community.

**Speech Finals Success**

This week's highlight was undoubtedly our School Speech Finals, held on Wednesday morning. The quality of presentations was exceptional, and all finalists should be immensely proud of the confidence, preparation, and skill they demonstrated.

**Year 8 Results**

🥇 1st Place: Jayde Wiggan    🥈 2nd Place: Patrick Wilson    🥉 3rd Place: Shiloh McQuinlan

**Year 7 Results**

🥇 1st Place: Sophie du Plessis    🥈 2nd Place: Paprika Chavez    🥉 3rd Place: Evie Liddle

Well done to each of these students and to everyone who participated in this year's speech competitions.

**Road Safety Reminder**

Sadly, the low light of this week was that one of our students was involved in an accident after school and was struck by a vehicle.

We are pleased to report that he has undergone surgery successfully and is recovering well, supported by his family and those around him. We wish him a speedy and full recovery.

This incident serves as an important reminder for all of us—staff, parents, caregivers and whānau—to continue having conversations with our children about road safety and making good decisions when travelling to and from school. Working together, we can help ensure all students remain safe within our community.

**Ngā mihi nui,**

**The Team at Taupō Intermediate School**

📞 07 378 8097    📧 [office@taupointermediate.co.nz](mailto:office@taupointermediate.co.nz)    📍 22 Kotare Road, Taupō 3330  
[www.taupointermediate.co.nz](http://www.taupointermediate.co.nz)

*"Make a positive difference through the T.I.S way"*

# ATTENDANCE CORNER

## Attendance Progress Report: Term 2 Week 10

### School Attendance Rates

ATTENDANCE RATE FOR THE SCHOOL				
Attendance Threshold Rates				
	Regular	Irregular	Moderate	Chronic
	91%-100%	81%-90%	71%-80%	Below 70%
	Maintenance & Recognition	Early Intervention	Support & Strategy	Intensive Recovery
Week 6	62.97%	19.80%	10.89%	6.34%
Week 7	64.54%	19.72%	8.96%	6.77%
Week 8	62.15%	22.51%	10.16%	5.18%
Week 9	63.10%	22.42%	8.53%	5.95%
Week 10	59.60%	25.74%	8.91%	5.74%

Our attendance data across Weeks 6–10 shows several positive trends that are worth celebrating.

While our **Regular Attendance** category (91–100%) is fluctuating between 59.6% and 64.5%, most of our students continued to attend regularly throughout a period that is traditionally impacted by winter illness and increased extracurricular commitments. Week 7 recorded our strongest result, with 64.54% of students achieving regular attendance.

Encouragingly, the percentage of students in the **Moderate Attendance** category (71–80%) reduced from 10.89% in Week 6 to 8.91% in Week 10, indicating that many students are maintaining attendance levels above this threshold. Similarly, our **Chronic Attendance** category (below 70%) remained relatively stable and finished lower than Week 6, decreasing from 6.34% to 5.74%. This reflects the ongoing efforts of staff, students, and whānau to support attendance and re-engagement.

The increase in students within the **Irregular Attendance** category (81–90%) from 19.80% to 25.74% suggests that many students remain connected to school but have missed only a small number of days. With just one week remaining in the term, there is a valuable opportunity for these students to strengthen their attendance and move back into the Regular Attendance category.

Overall, despite the challenges that often accompany the winter season, the data shows that many of our students continue to attend regularly or remain closely connected to school. We thank our parents, caregivers, and whānau for their ongoing support in prioritising attendance and ensuring students can fully participate in their learning, sporting commitments, cultural activities, and the many opportunities available at Taupō Intermediate School. Together, we can finish Term 2 strongly and continue to build positive attendance habits that support student success.

# BOARD CORNER

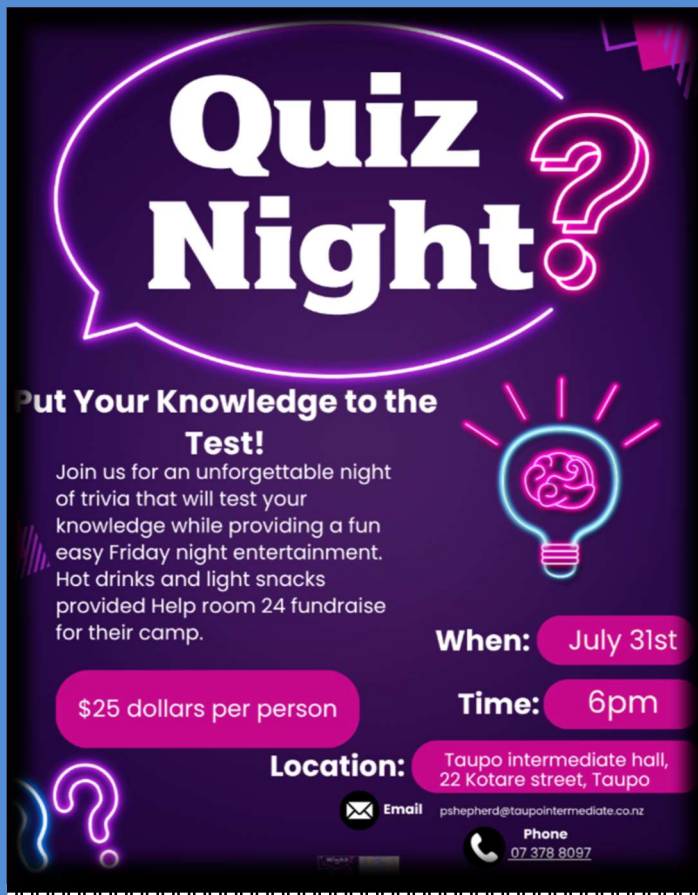
On Wednesday, I was lucky enough to attend our school speech competitions. I was genuinely blown away by the standard of the presentations. Congratulations to every student who took part in the finals. It takes real courage to stand up and speak in front of a full school hall, and it was clear that everyone had put a huge amount of effort into researching, preparing and practicing their speeches.

I'd also like to acknowledge every student across the school who prepared and delivered a class speech. Standing up in front of your classmates takes confidence and courage, and every student who gave it a go should be proud of their effort and willingness to challenge themselves.

A special congratulations to Year 8, 1st Place: Jayde Wiggan, 2nd Place: Patrick Wilson, 3rd Place: Shiloh McQuinlan and Year 7, 1st Place: Sophie du Plessis 2nd Place: Paprika Chavez 3rd Place: Evie Liddle for placing first, second and third respectively in the final. Well done to everyone who participated; you should all be incredibly proud of your achievements.

Our thoughts are with one of our students and their whānau following Thursday's accident on Kiddle Drive. This has been a distressing event for everyone in our school community. On behalf of the Board, we extend our heartfelt thoughts and best wishes for a full and speedy recovery. We know the school will continue to work closely with the family and provide whatever support it can during this difficult time.

Simon Bendall  
Presiding Member



## Quiz Night?

**Put Your Knowledge to the Test!**

Join us for an unforgettable night of trivia that will test your knowledge while providing a fun easy Friday night entertainment. Hot drinks and light snacks provided Help room 24 fundraiser for their camp.

**When:** July 31st

**Time:** 6pm

**Location:** Taupo intermediate hall, 22 Kotare street, Taupo

**Price:** \$25 dollars per person

**Email:** [pshepherd@taupointermediate.co.nz](mailto:pshepherd@taupointermediate.co.nz)

**Phone:** 07 378 8097



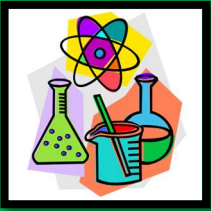
## ★ RAFFLE tickets ★

Get your raffle ticket today and be in to win fantastic vouchers from our generous local businesses! Every ticket sold helps support Room 24's fundraising efforts for their Hamilton camp. Thank you for helping our students create lasting memories while supporting our local community.

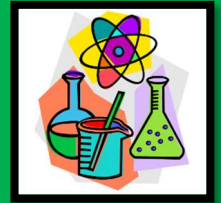
**DRAW 14<sup>TH</sup> AUGUST**

**PURCHASE FROM GIRLS CLASS STUDENTS- RM24**

**\$5 PER TICKET**



# SCIENCE



**Term Two is nearly at an end!**

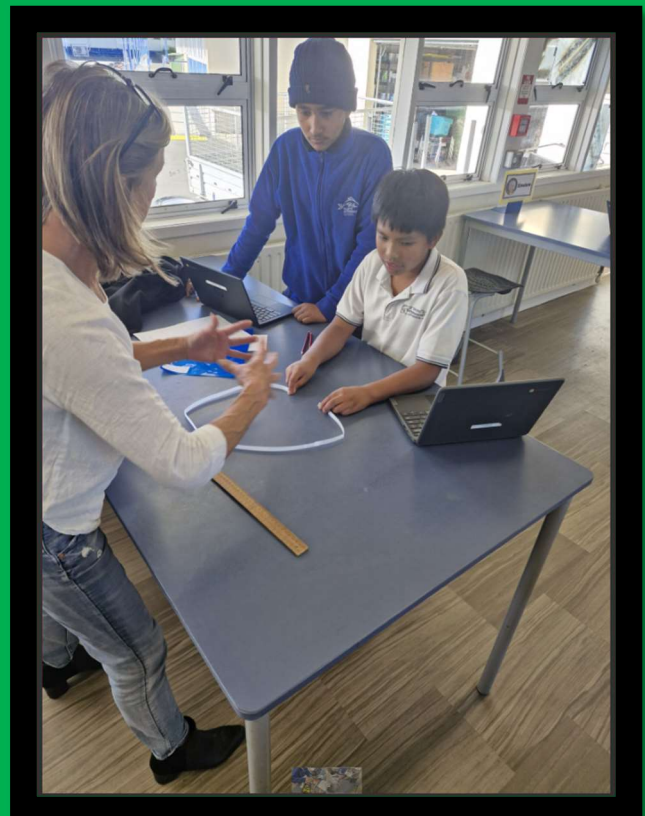
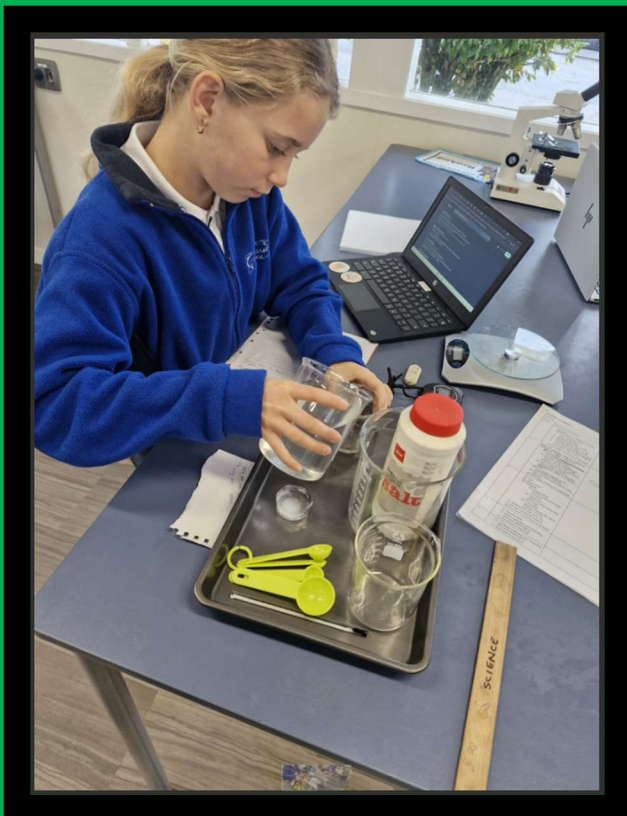
**Students are currently studying ECOLOGY. This involves looking at the abiotic and biotic factors in an ecosystem. They will look at food chains and webs in the lake ecosystem before investigating how humans have impacted on this ecosystem over time.**

**In the final week of this rotation, students will be studying PHYSICS. ie. force and motion. They will be designing and making cars powered by an internal force such as balloons or rubberbands.**

**Students are also working on a science investigation. Those who meet the required standards/ expectations, will be entered into the Waikato Science Fair in Week 1 of next term and judged in Week 6. All other projects will be showcased at school in Week 9 of Term 2.**

**It's so heartening to see the enthusiasm shown by our students. Subjects being investigated include growing bacteria samples on agar plates; how different nutrients in water affect growing cress; how temperatures affect ice melt in salt water, to name a few.**

**Keep up the good work budding scientists!**



# THE SUPPORT HUB

## 7 early signs of screen addiction in kids:

- Meltdowns when the screen goes away
- Constantly asking for more screen time
- Loss of interest in other activities
- Sneaking in screen time when they think you're not looking
- Rushing through homework or chores to get back to screens
- Being grumpy or irritable until they get their device
- Frequent headaches, tired eyes, poor sleep



If you're nodding your head to even one or two of these, **you're not alone.** When screens start affecting mood, sleep, homework, chores, and family connection, it can feel hard to know what to do next.

### Many parents feel caught between two extremes:

Letting screen habits keep getting worse.

Or becoming the full-time screen police.

But there is another way.

That's exactly why we created **Mastering Screen Time: Parenting in the Digital Age Masterclass** [inside Growth minded.](#)

It's designed to help you guide your child toward healthier screen habits with more calm, confidence, and practical tools you can use at home.

👉 And this is your **last chance** to [join FREE with your 7-day Growth minded free trial.](#)

But that's not the best part.

[Inside Growth Minded](#), you'll also get:

- ✓ A **personal parenting coach** you can turn to when you need guidance
- ✓ Access to **800+ resources** for every age and stage
- ✓ A **live Q&A call** after the masterclass, so you know how to implement what you learned  
So you're getting *tools, support, and a real plan* for what to do next.

If you're a professional and want to bring this work into your classroom or practice, start here:

- ◆ [Growth Minded for Educators](#)
- ◆ [Growth Minded for Therapists](#)

We start tomorrow!

I'll see you inside.

With gratitude,  
Alexandra

Founder & Author, Big Life Journal

# THE SUPPORT HUB

## SIGNS OF DYSLEXIA

### READING TAKES EXTRA EFFORT

Reading may be slow, tiring, or feel like hard work, even when the child understands the story when it's read aloud.

Words can seem to move, blur, or lose their place on the page.

The child might guess words, skip lines, or avoid reading altogether.

This isn't a lack of interest or motivation — it's the brain working overtime to decode print.

### WRITING DOESN'T MATCH THINKING

A child with dyslexia often has strong ideas but struggles to get them onto paper. Writing may be short, messy, or missing words.

Sentences can sound far better when spoken than written.

Spelling errors are common and inconsistent.

This gap between thinking and writing can lead to frustration, embarrassment, or reluctance to start tasks.

### SPELLING STAYS TRICKY OVER TIME

Spelling may not stick, even after lots of practice. The same word might be spelled differently on the same page. Phonics rules can feel confusing or unreliable.

This isn't carelessness — dyslexic brains process sounds and letter patterns differently, making automatic spelling harder without the right support.

### MEMORY AND PROCESSING FEEL OVERLOADED

Instructions with lots of steps can be difficult to hold in mind. The child may forget what to do next, lose track, or need reminders. This is often about working memory, not attention.

When too much language is coming in at once, the brain can become overloaded and learning slows down.

### AVOIDANCE CAN BE A SIGN OF STRAIN

You might notice avoidance, distraction, tiredness, or behaviour changes around reading and writing tasks.

These are often stress responses, not defiance. When learning repeatedly feels hard or exposing, children protect themselves by switching off, acting silly, or saying they don't care — even when they do.

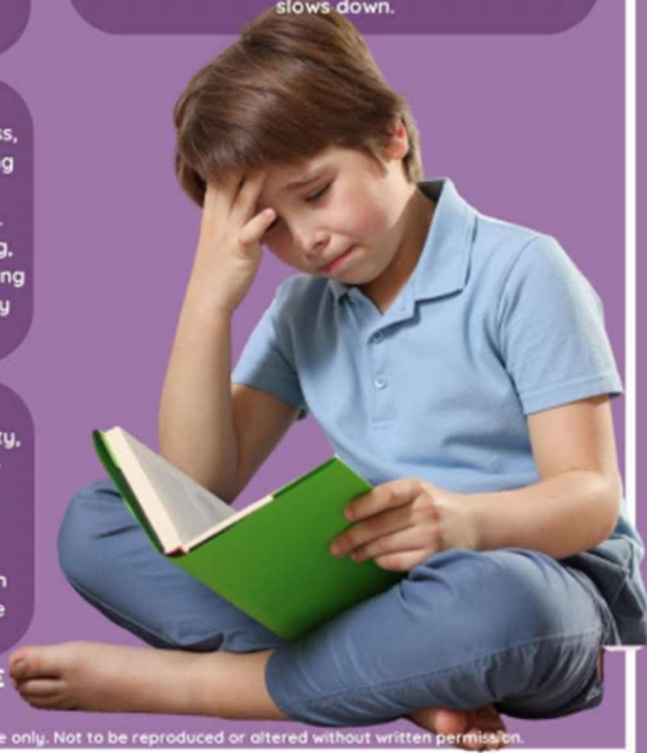
### STRENGTHS ARE OFTEN OVERLOOKED

Many children with dyslexia show strong creativity, problem-solving, empathy, storytelling, or big-picture thinking. They may learn best through visuals, discussion, hands-on experiences, or technology.

Dyslexia is a difference, not a deficit — and with understanding and the right adjustments, these children can thrive.

For a **FREE A Bitesize Guide to Dyslexia**, **LIKE** the post and comment **DYSLEXIA** below.

©TheContentedChild. For personal/professional use only. Not to be reproduced or altered without written permission.



# MANA AKE



"It's been an awesome term of Tues/Thurs activities with Just Dance in the hall at interval often having 70+ students participating! We have some more board games added to the collection and have moved to Rm 21 for the lunch activities. Lego + Chess + Colouring continue to be favourites. With plenty more cold weather ahead, we look forward to another enjoyable Term 3"

Nicole GreyWayfinder - ( Waiariki Mana Ake)



# Samoa Language

## Week in room 25

### Talofa

**LI: create a Siapo design for a Samoan tapa**

This week in Room 25, we celebrated Samoan Language Week by creating a collaborative Siapo Cloth.



*Siapo, also known as tapa, is one of the oldest Samoan cultural art forms.*

*For centuries Siapo has been passed from generation to generation.*

*Even so, it has fast become a nearly extinct art form. Siapo is not only a decorative art, but also a symbol of Samoan culture.*

*Its uses include clothing, burial shrouds, bed covers, ceremonial garments and much more. There are two forms of Siapo, Siapo 'Elei (The Rubbing Method) and Siapo Mamanu (The Freehand Method).*

First, we read the story "Welcome to Luallo Marnoo" By Victor Rodger, where we meet Michael who gets to meet his father and go to Samoa for the first time.

We then researched Samoa culture and completed a fact file with the information that we found to consolidate our learning.

# PHYSICAL EDUCATION

## LUNCHTIME NETBALL CHAMPIONS!

A few weeks ago, our Lurchtime Netball Competition came to an end after what felt like some of the toughest semi-finals and finals we've seen yet!

With an incredible five classes tied at the top, the competition was so close that another round robin was needed to separate the teams. Every game was fiercely contested, with students showing fantastic skill, determination, teamwork, and sportsmanship.

After an epic battle, Room 10 emerged victorious and earned the right to take on the ultimate challenge — the Teachers! 😊

While the staff team entered the game feeling confident, we'd be lying if we said we weren't a little nervous. Room 10 had improved every single week, and their teamwork and game sense had become seriously impressive. (Let's be honest... we were also slightly concerned about our ageing bodies making it through injury-free! 😊)

When game day arrived, the atmosphere was electric. The music was pumping, students packed the sidelines, and the support from both teams created an unforgettable lunchtime experience.

One of my personal highlights was stepping off the court and simply watching it all unfold — students cheering, classmates supporting one another, teachers getting involved, and everyone having fun together. Moments like these remind us exactly why we do what we do.

As a PE Department, we are incredibly proud of every student who participated. Not only have you embraced the skills we've been teaching, but you've also started developing your own strategies, tactics, and game plans. That's what sport is all about!

A huge congratulations to everyone who played, supported, encouraged, and got involved throughout the competition. You are the reason these events are such a success.

And a special congratulations to 🏆 Room 10 🏆 for lifting the Lunchtime Sport Shield for the Netball Season! Hold onto that shield tightly because the next challenge has already begun...

## HANDBALL IS HERE!

Our new 4-week Handball Competition kicked off this week, and we can't wait to see what our students bring to the court. Game on, Taupō Intermediate!!

Charné and Dee  
PE Department 🧡

# PHYSICAL EDUCATION





# T.I.S SPORTS



## CO-ORDINATOR NEWS

**Winter has certainly arrived! A huge thank you to all our parents, coaches, managers, and supporters who continue to get out there on those cold, dark afternoons and evenings to provide opportunities for our students. Your commitment and enthusiasm are greatly appreciated and make a real difference to our sporting programmes.**

With temperatures continuing to drop, please ensure students are dressed appropriately for trainings and games. If students choose to wear thermals underneath their playing uniform, these should be **plain blue or black**. If your team does not have a team hoodie, students should wear their **school fleece or jacket** for warm-ups and while waiting between games.

Unfortunately, the weather got the better of us last week and the **Big O Orienteering Day** had to be postponed. While disappointing, student safety is always our priority. We are now all set to go on **Wednesday 1st July**, so fingers crossed for some kinder weather conditions and a fantastic day of navigation and adventure.

We would also like to wish our **Indoor Bowls team** all the very best as they travel to Tauranga this week to compete in the Super 11 Tournament. This is a wonderful opportunity for the students to gain valuable experience and continue their preparation for the AIMS Games. We know they will represent Taupo Intermediate with pride.

### **Colour Run Fundraiser**

Please encourage your son or daughter to sign up and start fundraising for our upcoming **Colour Run**. We would love to see every student involved!

The Colour Run will take place on our **School Cross Country Day** and will be held after the competitive races have been completed. This event is all about participation, fun, and school spirit. Students can run, jog, walk, laugh, and get covered in colour while helping raise funds for new sports uniforms.

There will be **some fantastic prizes up for grabs** for students who get involved with fundraising, providing an extra incentive to sign up and support the event.

We are also proud to be supporting **KidsCan**, a charity that does incredible work helping New Zealand children in need. A portion of the funds raised will go towards this valuable cause, allowing our students to make a positive difference in the lives of others while supporting their own school community.

Thank you for your ongoing support. We are looking forward to a fun, colourful, and memorable day for everyone involved! 



# T.I.S SPORTS PHOTOS



# COLOUR RUN

**Every contribution**, no matter how big or small, will help. Imagine the impact if all **500 students** got involved—together we could make a huge difference to our sports programmes and ensure our students continue to look their best when representing Taupo Intermediate.

**I have included the leaderboard for the classes and students who have fundraised the most so far.**

On Wednesday in assembly we will play "spin the wheel" and if spinner lands on their name they could win a \$10 tuck shop voucher. **But they have to be registered to be included.**

Top Students				Top Classes		
Rank	Student	Class		Rank	Class	Profiles
1st	 Harlow Cribb	Room 6		1st	Room 4	9
2nd	 Sadie Eyes	Room 4		2nd	Room 13	9
3rd	 Rose Bloor	Room 13		3rd	Room 24	11
4th	 Cassie Waiariki	Room 5		4th	Room 16	7
4th	 Kase Walker	Room 10		5th	Room 6	15

# Visual Arts Newsletter

## INNOVATION & CHANGE (Art Styles) Realism, Abstract & Non-Objective

Students are learning how art can change over time, from realistic to abstract and non-objective styles. They are exploring how artists try new ideas and different ways of creating to show innovation and change.

The results were amazing and more students can now identify & explain the difference between the styles.



# Visual Arts Newsletter



Well done to all students for their creativity, risk-taking and willingness to explore new artistic possibilities!

# STAFF SNAPSHOT



Kia ora! My name is Shivani Swastika Chand, and I am excited to be part of our wonderful school community. I have over 11 years of teaching experience in both Fiji and New Zealand and am passionate about creating a positive, inclusive, and engaging learning environment where every child feels valued and supported.

I enjoy helping students become confident, curious learners through hands-on activities, meaningful relationships, and a love of learning. Outside the classroom, I enjoy spending time with my family, reading, cooking, camping, swimming, and playing music.

I look forward to working alongside our students, whānau, and wider school community to make this a fantastic year of learning and growth.

## T.I.S TUCK SHOP KRISTIE'S KAI

MORNING TEA PLAY BREAK - 10.40AM-11.10AM

(Buy items at tuckshop window)

LUNCH TIME PLAY BREAK - 12.40-1.20PM

(Buy items at tuckshop window)



SUSHI AVAILABLE - Every TUESDAY (Order at tuckshop by 9am)

# **T.I.S IMPORTANT** **UPCOMING DATES**

**JUNE/JULY 2026**

**TERM TWO**

**Week 11**

**Wednesday 1<sup>st</sup> July - Celebration Assembly**

**Friday 3<sup>rd</sup> July - Last day of Term 2**

**JULY/AUGUST/SEPTEMBER 2026**

**TERM THREE**

**Week 1**

**Monday 20<sup>th</sup> July - First day of Term 3**

**Wednesday 22<sup>nd</sup> July - Celebration Assembly**

**Friday 24<sup>th</sup> July - Super 11 Basketball**

**Week 2**

**Tuesday 28<sup>th</sup> July - School Cross Country**

**Friday 31<sup>st</sup> July - Super 11 Winter Tournament**

**Week 3**

**Wednesday 5<sup>th</sup> August - Celebration Assembly**

**Thursday 6<sup>th</sup> August - Board Meeting 5.30pm-7.30pm**

**Wednesday 5<sup>th</sup> August - Room 9 Golf Sim Day**

**Friday 7<sup>th</sup> August - Super 11 Cross Country**

**Week 4**

**Tuesday 11<sup>th</sup> August - Maths Whizz team at TIS**

**Thursday 13<sup>th</sup> August - Bandquest Waikato**

**Friday 14<sup>th</sup> August - Science Roadshow**

**Friday 14<sup>th</sup> August - Super 11 Rugby League**

**Week 5**

**Wednesday 19<sup>th</sup> August - Celebration Assembly**

**Wednesday 19<sup>th</sup> August - Waikato Science Fair**

**Friday 21<sup>st</sup> August - Taupo Inter Schools Cross Country**

**Week 6**

**Monday 24<sup>th</sup> August - College Visits for Year 8**

**Wednesday 26<sup>th</sup> August - Tough Guy Gal Challenge**

**Friday 28<sup>th</sup> August - TOD - School Closed**

**Week 7**

**Tuesday 1<sup>st</sup> September - R24 Waikato Visit**

**Wednesday 2<sup>nd</sup> September - R24 Waikato Visit**

**Wednesday 2<sup>nd</sup> September - Celebration Assembly**

**Thursday 3<sup>rd</sup> September - R24 Waikato Visit**